

Main Hiking Trails over Bugaksan Mountain

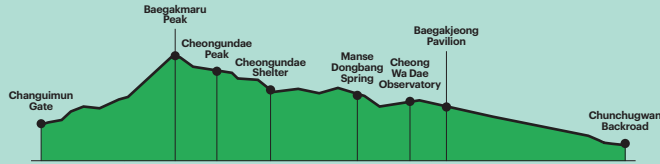
A Trail

Changuimun-Baegakmaru Trail

Changuimun Gate → Baegakmaru Peak → Cheongundae Peak → Cheongundae Shelter → Manse Dongbang Spring → Cheong Wa Dae Observatory → Baegakjeong Pavilion → Chunchugwan Backroad

Difficulty ☆☆☆☆ | Total travel distance 3.32km | Average travel time 1 hour 30 minutes

This course along the Seoul City Wall Trail offers the chance to embrace the blend of cityscapes and serene woodlands.



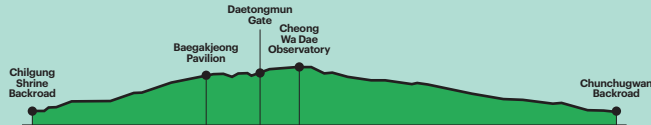
B Trail

Cheong Wa Dae Observatory-Chunchugwan Trail

Chilgung Shrine Backroad → Baegakjeong Pavilion → Daetongmun Gate → Cheong Wa Dae Observatory → Chunchugwan Backroad

Difficulty ☆☆☆☆ | Total travel distance 2.18km | Average travel time 50 minutes

This course unveils a panorama of central Seoul, spanning from Cheong Wa Dae to Gyeongbokgung Palace and City Hall.



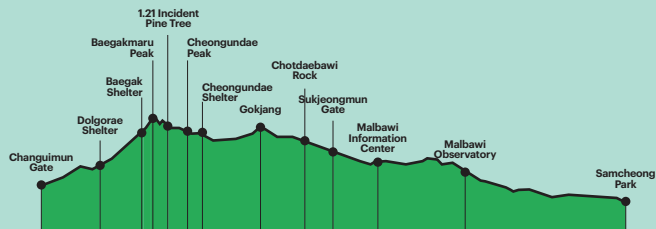
C Trail

Changuimun Gate-Malbawi Rock Trail

Changuimun Gate → Dolgorae Shelter → Baegak Shelter → Baegakmaru Peak → 1.21 Incident Pine Tree → Cheongundae Peak → Cheongundae Shelter → Gokjang → Chotdaebawi Rock → Sukjeongmun Gate → Malbawi Information Center → Malbawi Observatory → Samcheong Park

Difficulty ☆☆☆☆ | Total travel distance 4km | Average travel time 1 hour 50 minutes

One of Bugaksan Mountain's oldest trails, this course presents hikers with stunning views of Samcheong-dong.



Learn More

To spread the charm of Seoul's beautiful mountains, the Seoul Tourism Organization operates hiking tourism centers near major mountains in the city. Visit other centers, too, if you wish to find out more about Seoul's mountains!



Bukhansan Center

Located at the entrance of Bukhansan National Park, it is an ideal spot for easy access to some of the major trails up Bukhansan Mountain.



- Location** 5F, 52 Samyang-ro 173-gil, Gangbuk-gu, Seoul
☎ 82-1533-2608
- Business Hours** 9:00 a.m.-6:00 p.m.
(Closed every Monday and on Seollal and Chuseok)
- Directions** 🚶🏻‍♂️ Bukhansan Ui Station, Exit 2, 5-minute walk

Gwanaksan Center

Situated on B1 of Gwanaksan Station, the Gwanaksan Center provides hiking and tourism information for Gwanaksan Mountain and its surroundings, catering to hikers and subway passengers alike.



- Location** 23 Sillim-ro, Gwanak-gu, Seoul
(inside Gwanaksan Station on the Sillim Line)
☎ 82-1533-2162
- Business Hours** 9:00 a.m.-6:00 p.m.
(Closed once a week and on Seollal and Chuseok)
- Directions** 🚶🏻‍♂️ Exit 1, Gwanaksan Station, Sillim Line

-SEOUL HIKING TOURISM- BUGAKSAN CENTER



Bugaksan Center

Seoul Hiking Tourism Center (Bugaksan Mountain), located in Samcheong-dong, Jongno-gu, offers a wide variety of services for hiking tourists. Visit the center to enjoy the spectacular view offered by "hiking in the city."

Hiking Tourism Information

Information about Bugaksan Mountain and various hiking trails in Seoul is provided at the center. Promotional materials including Seoul hiking tourism guides and maps are also available.



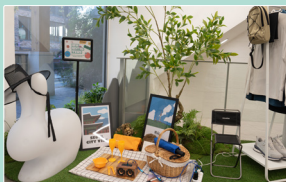
Hiking Tourism Experience Programs

Various experience programs are available for international hiking tourists, including climbing and night hiking.

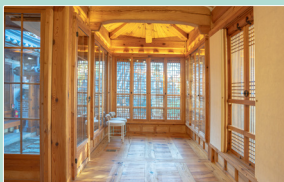


Exhibition Zone and Hanok Lounge

The exhibition zone within the center is available for visitors to capture memories made with friends, family, or companions, and the Hanok lounge is for visitors to prepare for their hike or relax afterward.



Exhibition Zone



Hanok Lounge

Hiking Gear Rental

Foreign hiking tourists can rent essential hiking gear such as shoes, clothing, trekking poles, and backpacks at affordable prices. Gears can be reserved to ensure availability.



Reservation : www.seoulhiking.or.kr

Rental Gears : Backpack, hiking shoes, hiking clothes (top/pants), gloves, and trekking poles

Other Facilities



Lockers



Dressing Room

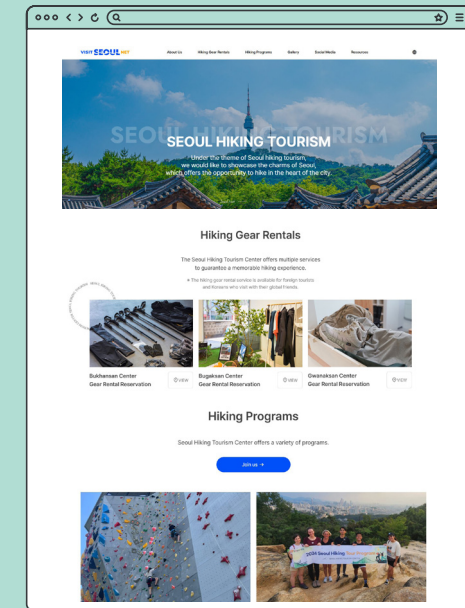
Instagram

Stay updated on special events and experience programs. Follow us to enjoy Seoul's outstanding mountains and nature.



Website

You can find various kinds of information on the official website of Seoul Hiking Tourism Center.



Directions

Location

88 Samcheong-ro, Jongno-gu, Seoul
☎ 82-1533-2158

③ **Anguk Station** (Line 3), Exit 2, 16-minute walk

③ **Gyeongbokgung Station** (Line 3), Exit 4, 24-minute walk

⑤ **Gwanghwamun Station** (Line 5), Exit 2, 26-minute walk

Business Hours

9:00 a.m.–6:00 p.m.

(Closed every Tuesday and on Seollal and Chuseok)

※ Business hours may vary.

Please refer to our website before visiting.