

## Main Hiking Trails over Bukhansan Mountain

### A Trail Bukhansan Dulle-gil: Uiryong-gil Trail

Ui Entrance, Uiryong-gil → Uiryong-gil Visitor Center → Anti-tank Obstacles → Obong Observatory → Gyohyeon-ri Entrance, Uiryong-gil  
 Difficulty ☆☆☆☆ | Total travel distance 6.42km | Average travel time 2 hour

This route offers a relaxing walk along an unpaved road nestled between Bukhansan Mountain and Dobongsan Mountain.

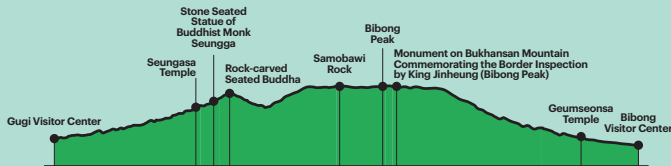


### B Trail Samobawi-Bibong Trail

Gugi Visitor Center → Seungasa Temple → Stone Seated Statue of Buddhist Monk Seungga → Rock-carved Seated Buddha → Samobawi Rock → Bibong Peak → Monument on Bukhansan Mountain Commemorating the Border Inspection by King Jinheung (Bibong Peak) → Geumseonsa Temple → Bibong Visitor Center

Difficulty ☆☆☆☆ | Total travel distance 6km | Average travel time 3 hour

This trail follows traces of history, including the Monument on Bukhansan Mountain Commemorating the Border Inspection by King Jinheung and Geumseonsa Temple.

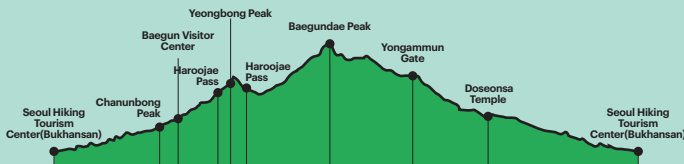


### C Trail Baegundae-ui Gugok Trail

Seoul Hiking Tourism Center(Bukhansan) → Chanunbong Peak → Baegun Visitor Center → Haroojae Pass → Yeongbong Peak → Haroojae Pass → Baegundae Peak → Yongammun Gate → Doseonsa Temple → Seoul Hiking Tourism Center(Bukhansan)

Difficulty ☆☆☆☆ | Total travel distance 9.98km | Average travel time 4 hour 20 minutes

Despite its difficulty, this is the quickest route to the top of Baegundae Peak.



## Learn More

To spread the charm of Seoul's beautiful mountains, the Seoul Tourism Organization operates hiking tourism centers near major mountains in the city. Visit other centers, too, if you wish to find out more about Seoul's mountains!



### Bugaksan Center

Located on the cultural street of Samcheong-dong in Central Seoul, it serves as a gateway to embrace the city's urban scenery and natural beauty.



**Location** 88 Samcheong-ro, Jongno-gu, Seoul  
 ☎ 82-1533-2158

**Business Hours** 9:00 a.m.–6:00 p.m.  
 (Closed every Tuesday and on Seollal and Chuseok)

**Directions**

- 3 Anguk Station (Line 3), Exit 2, 16-minute walk
- 3 Gyeongbokgung Station (Line 3), Exit 4, 24-minute walk
- 5 Gwanghwamun Station (Line 5), Exit 2, 26-minute walk

### Gwanaksan Center

Situated on B1 of Gwanaksan Station, the Gwanaksan Center provides hiking and tourism information for Gwanaksan Mountain and its surroundings, catering to hikers and subway passengers alike.



**Location** 23 Sillim-ro, Gwanak-gu, Seoul  
 (inside Gwanaksan Station on the Sillim Line)  
 ☎ 82-1533-2162

**Business Hours** 9:00 a.m.–6:00 p.m.  
 (Closed once a week and on Seollal and Chuseok)

**Directions** 신림 Exit 1, Gwanaksan Station, Sillim Line

# -SEOUL HIKING TOURISM- BUKHANSAN CENTER





# Bukhansan Center

Seoul Hiking Tourism Center (Bukhansan Mountain) is 5 minutes away from Bukhansan Ui Station on foot, providing various services for hikers. Visit the center to enjoy the spectacular view offered by "hiking in the city."

## Hiking Tourism Information

Information about Bukhansan Mountain and various hiking trails in Seoul is provided at the center. Promotional materials including Seoul hiking tourism guides and maps are also available.

## Hiking Tourism Experience Programs

Various experience programs are available for international hiking tourists, including climbing and night hiking.



## Exhibition Zone and Lounge

The exhibition zone within the center is available for visitors to capture memories made with friends, family, or companions, and the lounge is for visitors to prepare for their hike or relax afterward.



Exhibition Zone



Lounge



## Hiking Gear Rental

Foreign hiking tourists can rent essential hiking gear such as shoes, clothing, trekking poles, and backpacks at affordable prices. Gears can be reserved to ensure availability.



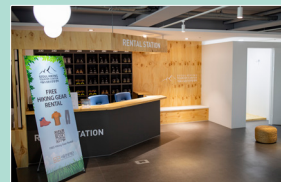
**Reservation :** [www.seoulhiking.or.kr](http://www.seoulhiking.or.kr)

**Rental Gears :** Backpack, hiking shoes, hiking clothes (top/pants), gloves, and trekking poles

## Other Facilities



Lockers



Dressing Room

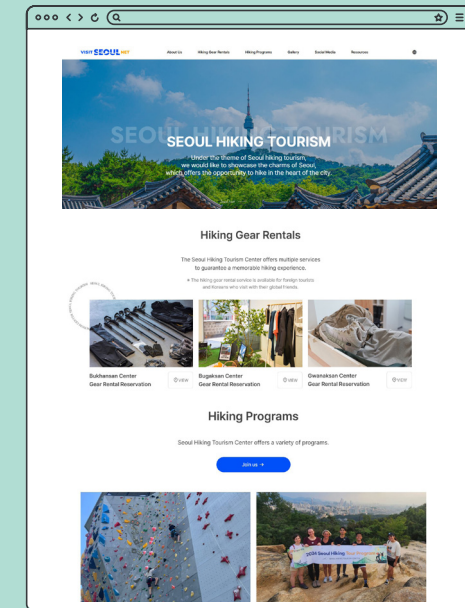
## Instagram

Stay updated on special events and experience programs. Follow us to enjoy Seoul's outstanding mountains and nature.



## Website

You can find various kinds of information on the official website of Seoul Hiking Tourism Center.



## Directions

**Location** 5F, 52 Samyang-ro 173-gil, Gangbuk-gu, Seoul  
 Exit 2 of Bukhansan Ui Station  
 ☎ 82-1533-2608

**Business Hours** 9:00 a.m.–6:00 p.m.  
 (Closed every Monday and on Seollal and Chuseok)  
 ※ Business hours may vary.  
 Please refer to our website before visiting.